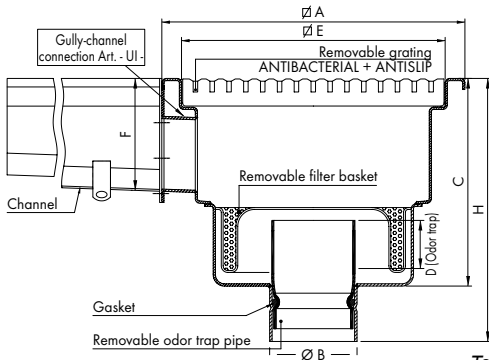


made of grade 304 stainless steel - grade 316 on request

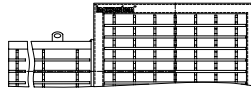
Gullies with grating and vertical outlet, with one gully-channel connection removable Total Hygienic internal odor trap pipe and filter basket.



F = OVERALL CHANNEL HEIGHT

Dwg. No. 0310

Total Hygienic Multi-Slot grating without banding bar ANTIBACTERIAL + ANTI-SLIP



| Article | DIMENSIONS IN mm | | | | | FLOW RATE | | LOAD CAPACITY IN Kg | | |
|-----------------|------------------|-----|------|------|----|-----------|----------|---------------------|--------------|-------------|
| | Ø A | Ø E | Ø B* | C | D | H | with Kit | without kit | CONCENTRATED | DISTRIBUTED |
| R-low profile | | | | | | | | | | |
| R CGV 300 75 E | 300 | 250 | 75 | F180 | 20 | F150 | 80 | 180 | 850 | 6500 |
| CGV 300 75 E | 300 | 250 | 75 | F120 | 50 | F190 | 80 | 180 | 850 | 6500 |
| R CGV 300 110 E | 300 | 250 | 110 | F180 | 20 | F180 | 135 | 340 | 850 | 6500 |
| CGV 300 110 E | 300 | 250 | 110 | F120 | 50 | F220 | 135 | 340 | 850 | 6500 |
| R CGV 400 110 E | 400 | 350 | 110 | F180 | 20 | F180 | 135 | 340 | 600 | 5000 |
| CGV 400 110 E | 400 | 350 | 110 | F120 | 50 | F220 | 135 | 340 | 600 | 5000 |
| R CGV 500 110 E | 500 | 450 | 110 | F180 | 20 | F180 | 135 | 340 | 450 | 3500 |
| CGV 500 110 E | 500 | 450 | 110 | F120 | 50 | F220 | 135 | 340 | 450 | 3500 |



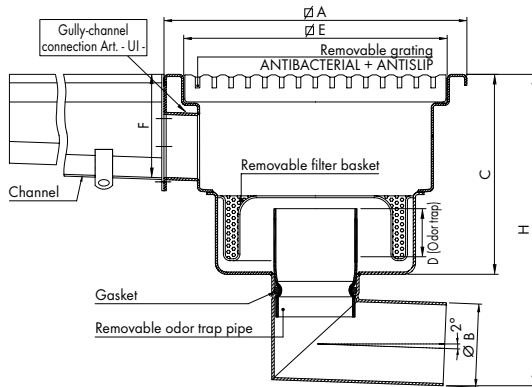
Provided with removable odor trap pipe & filter basket kit Code KE

* Outlet Ø 63 mm available on request.

N.B. water seal depth (dimension D) of 50 mm in compliance with standard UNI EN 1253-1



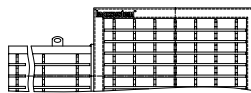
Gullies with grating and horizontal outlet, with one gully-channel connection removable Total Hygienic internal odor trap pipe and filter basket.



F = OVERALL CHANNEL HEIGHT

Dwg. No. 0305

Total Hygienic Multi-Slot grating without banding bar ANTIBACTERIAL + ANTI-SLIP



| Article | DIMENSIONS IN mm | | | | | FLOW RATE | | LOAD CAPACITY IN Kg | | |
|-----------------|------------------|-----|------|------|----|-----------|----------|---------------------|--------------|-------------|
| | Ø A | Ø E | Ø B* | C | D | H | with Kit | without kit | CONCENTRATED | DISTRIBUTED |
| R-low profile | | | | | | | | | | |
| R CGL 300 75 E | 300 | 250 | 75 | F180 | 20 | F190 | 80 | 180 | 850 | 6500 |
| CGL 300 75 E | 300 | 250 | 75 | F120 | 50 | F230 | 80 | 180 | 850 | 6500 |
| R CGL 300 110 E | 300 | 250 | 110 | F180 | 20 | F235 | 135 | 340 | 850 | 6500 |
| CGL 300 110 E | 300 | 250 | 110 | F120 | 50 | F275 | 135 | 340 | 850 | 6500 |
| R CGL 400 110 E | 400 | 350 | 110 | F180 | 20 | F235 | 135 | 340 | 600 | 5000 |
| CGL 400 110 E | 400 | 350 | 110 | F120 | 50 | F275 | 135 | 340 | 600 | 5000 |
| R CGL 500 110 E | 500 | 450 | 110 | F180 | 20 | F235 | 135 | 340 | 450 | 3500 |
| CGL 500 110 E | 500 | 450 | 110 | F120 | 50 | F275 | 135 | 340 | 450 | 3500 |



Provided with removable odor trap pipe & filter basket kit Code KE

* Outlet Ø 63 mm available on request.

N.B. water seal depth (dimension D) of 50 mm in compliance with standard UNI EN 1253-1



By removing both filter basket and internal odor trap pipe the wastewater flows and the floor drain should be thoroughly cleaned. It is highly recommended to fill the floor drain with water after cleaning in order to stop smells from coming back up.

