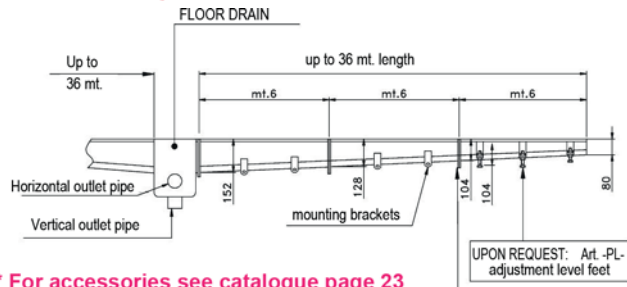
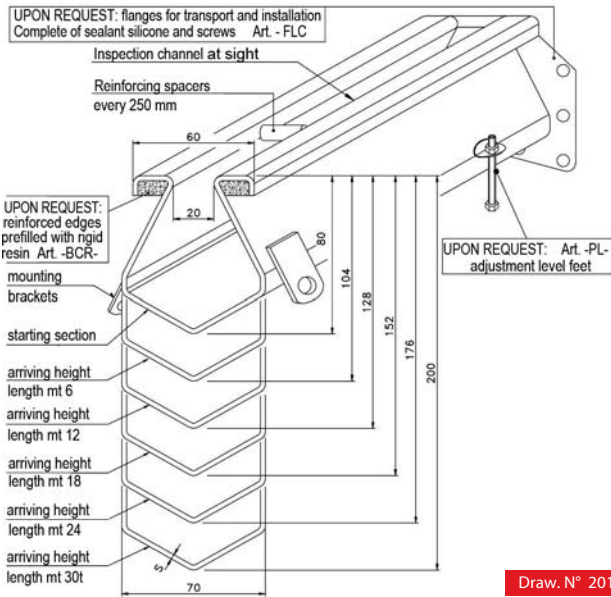
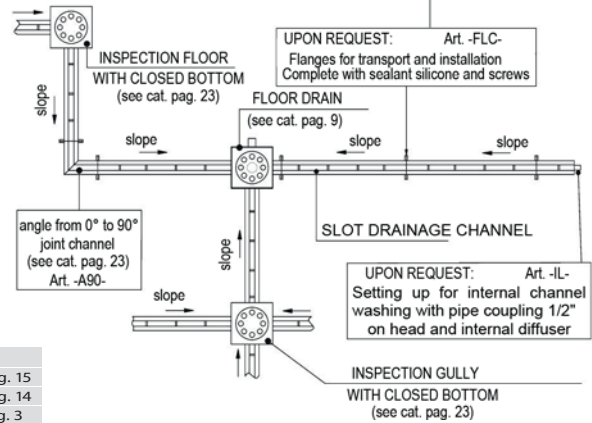


Modular slot drainage channel,

with (upon request) connection flanges, reinforced edges, siphoned floor drains, etc...



* For accessories see catalogue page 23



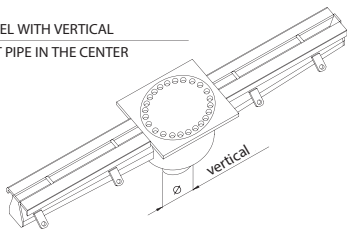
Article	Optional accessories	
C1	1,5	Reduced slot drainage channel with "heel proof" slot (8mm) ideal for terraces, swimming pool, etc
C2	2	Standard slot drainage channel 20mm ideal for food processing industry
MC2	2	Standard slot drainage channel 20mm increased section mm100 ideal for large flows
C3	3	Upon request increased thickness construction and self-supporting edges (dis. 2011)

Article	Optional accessories	
C1	FLC* BCR** PL***	The different articles can be equipped with floor drain upon customer's request
C2	FLC* BCR** PL***	
MC2	FLC* BCR** PL***	
C3	FLC* / PL***	
FLC*: Flange set for channel transport and installation		see catalogue pag. 23
BCR**: Reinforced borders for channel, prefilled with rigid self-clinging resin		see catalogue pag. 23
PL***: Adjustment level feet		see catalogue pag. 23

Loading class channel UNI EN 1433: 2004	Class
C1 Low wheel bearing channel	B 125
C2 Medium duty channel	C 250
MC2 Medium duty channel	C 250
C2+BCR Heavy duty channel	D 400
C3 Heavy duty channel	E 600

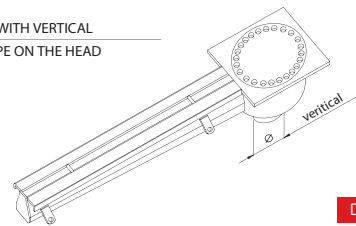
See also "slot drainage channel" described on page 14-15 and on page 24-25

CHANNEL WITH VERTICAL OUTLET PIPE IN THE CENTER

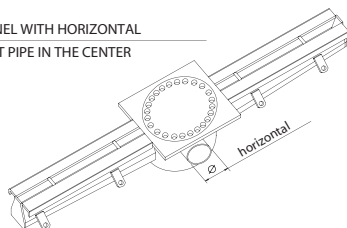


APPLICATION EXAMPLES

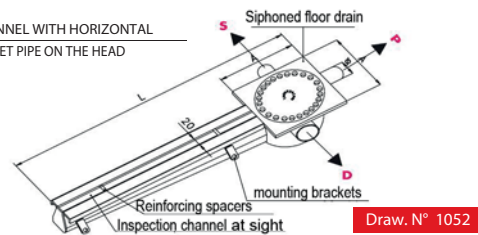
CHANNEL WITH VERTICAL OUTLET PIPE ON THE HEAD



CHANNEL WITH HORIZONTAL OUTLET PIPE IN THE CENTER



CHANNEL WITH HORIZONTAL OUTLET PIPE ON THE HEAD



- N.B.**
- Build-in slope of 4mm for linear meter
 - Reinforcing spacers (each 250mm)
 - Mounting brackets by floor laying
 - Upon request: flanges (each 3 or 6 mt) for transport and laying (art. - FLC -) - see cat pag. 23
 - Upon request: adjustment level feet in laying (art. - PL -) - see cat pag. 23
 - Upon request: reinforced edges, prefilled with rigid self-clinging resin (art. - BCR -) - see cat pag. 23
 - Upon request: setting up for internal channel washing with pipe coupling 1/2" on head plus internal diffuser (art. - IL -)

OUTLET PIPE ORIENTATION
S - LEFT
D - RIGHT
P - CONTINUED

N.B.: - All measures can be modified upon request.
- These drawings are property of INOXSYSTEM® They cannot be used or copied without our formal permission.