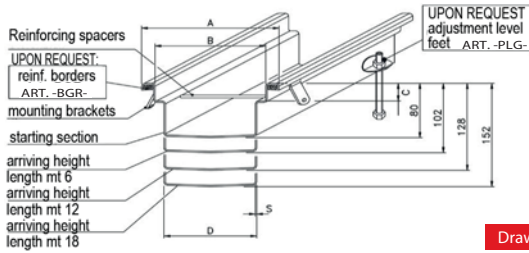
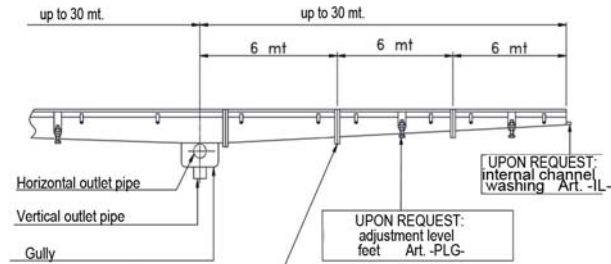


made in stainless steel 2 mm thickness AISI 304 - AISI 316 upon request

Modular channel with standard grating cover, with (upon request) connection flanges, reinforced edges, siphoned gullies (*), etc. *see page 9 or 11.

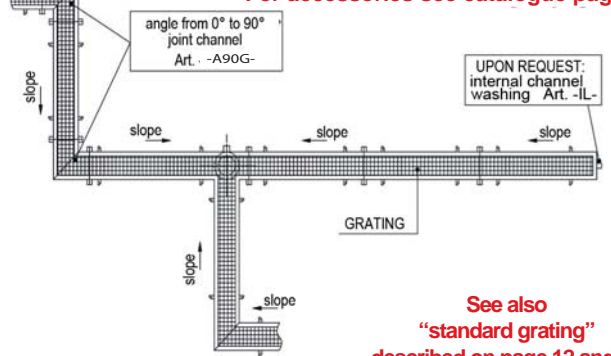


Draw. N° 0901



UPON REQUEST: ART. -FLG- Flanges for transport and installation Complete with sealant silicone and screws

For accessories see catalogue page 23

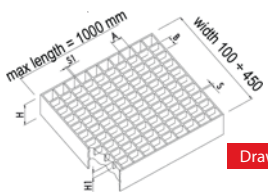


See also "standard grating" described on page 12 and 13

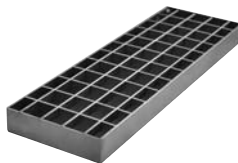
*= changeable values depending on the select grating

Article	Measure in mm			
S= mm 2	A	B	C	D
STANDARD				
CGS 150 25	150	104	26*	70
CGS 200 25	200	154	26*	120
CGS 250 25	250	204	26*	170
CGS 300 25	300	254	26*	220
CGS 350 25	350	304	26*	270
CGS 400 25	400	354	26*	320
CGS 450 25	450	404	26*	370
CGS 500 25	500	454	26*	420

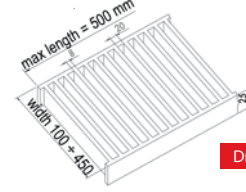
STANDARD GRATING



Draw. N° 0853

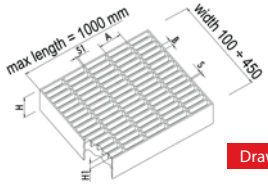


HEAVY LADDER GRATING

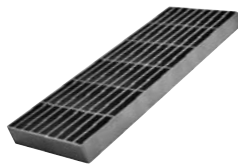


Draw. N° 0851

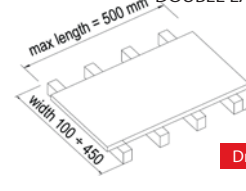
HEEL PROOF GRATING



Draw. N° 0854



GRATING ON PLATE WITH DOUBLE LATERAL SLOT

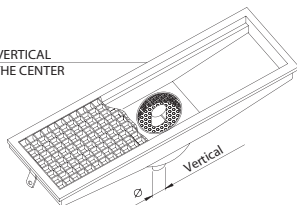


Draw. N° 0855

Mesh	Bearing bar	Cross bar	Draw.
AxB	HxS	H1xS1	
25x22(standard)	25x2	10x2	N° 0853
50x11 (heel proof)	25x2	10x2	N° 0854
25x8 (heavy plate)	25x8	25x8 (open 20)	N° 0851
Grating on full plate with side slots of 10mm			N° 0855

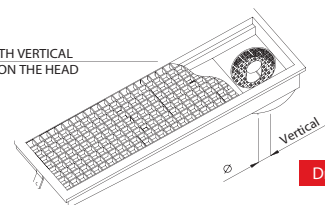
APPLICATION EXAMPLES

CHANNEL WITH VERTICAL OUTLET PIPE IN THE CENTER



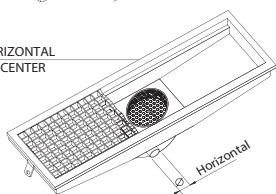
Draw. N° 0912

CHANNEL WITH VERTICAL OUTLET PIPE ON THE HEAD



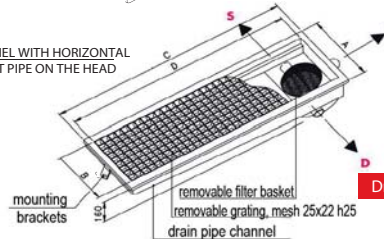
Draw. N° 0913

CHANNEL WITH HORIZONTAL OUTLET PIPE IN THE CENTER



Draw. N° 0914

CHANNEL WITH HORIZONTAL OUTLET PIPE ON THE HEAD



Draw. N° 0915

- N.B.**
- Build-in slope of 4mm for linear meter
 - Reinforcing spacers (each 250mm)
 - Mounting brackets by floor laying
 - Upon request: flanges (each 3 or 6 mt) for transport and laying (art. - FLG -) - see cat. page 23
 - Upon request: adjustment level feet in laying (art. - PLG -) - see cat. page 23
 - Upon request: reinforced edges, prefilled with rigid self-clinging resin (art. - BGR -) - see cat. pag. 23
 - Upon request: setting up for internal channel washing with pipe coupling 1/2" on head plus internal diffuser (art. - IL -)

OUTLET PIPE ORIENTATION	
S	LEFT
D	RIGHT
P	CONTINUED

N.B.: - All measures can be modified upon request.
- These drawings are property of INOXSYSTEM®. They cannot be used or copied without our formal permission.

www.inoxsystem.it